



# FMC-CW-75SP Series Self-Priming Frame Mounted Centrifugal Pump

These compact corrosion resistant pumps are perfect for smaller transfer, spray, or tank rinsing applications.

## Features:

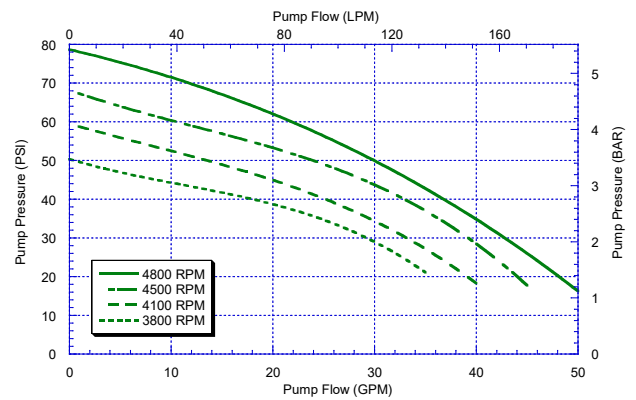
- Compact and light weight design
- All polypropylene construction with stainless steel internal hardware providing excellent corrosion resistance
- Self-priming up to 6 ft. (1.8 m)
- For belt driven applications.
- Clockwise rotation when viewed from shaft end



## SPECIFICATIONS

Pump Specifications	
Ports	1" NPT x 3/4" NPT
Max. Flow	50 GPM (189 LPM)
Max. Pressure	80 PSI (5.5 BAR)
Max. Speed	4800 RPM
Construction	Polypropylene
Seal	Carbon/Ceramic/FKM or Optional Silicon Carbide /FKM
Shaft	Stainless Steel
Bearings	Sealed for long life
Rotation	Clockwise (-CW) from shaft end
Impeller	Polypropylene with key
Priming Height	Maximum 6 feet (1.8 meters)

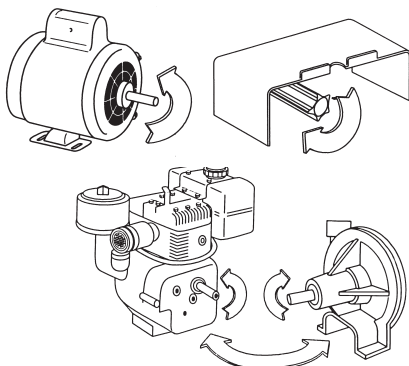
## PERFORMANCE



## Pump Speed Calculation

$$\frac{\text{Pump RPM}}{\text{Driveshaft RPM}} = \frac{\text{Drive Pulley Diameter}}{\text{Pump Pulley Diameter}}$$

## Rotation of Common Power Sources

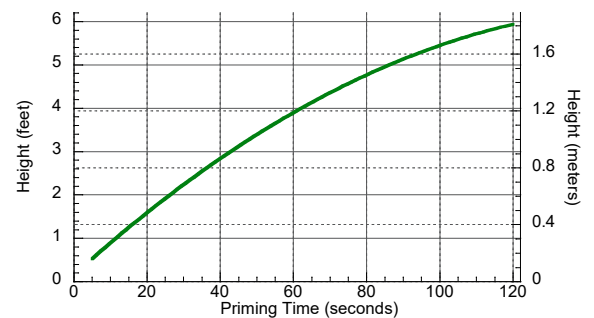


Consider GE-85SP model for direct mount to gas engine.

## Available Models

FMC-CW-75SP  
 FMCSC-CW-75SP

## Priming Curve



**Maximum Fluid Temperature - 140° F (60° C)**

**Fill pump volute prior to starting engine.**

**Do Not Run Dry** - Seal damage will result from running dry. Impeller damage may also occur if run dry for an extended period.

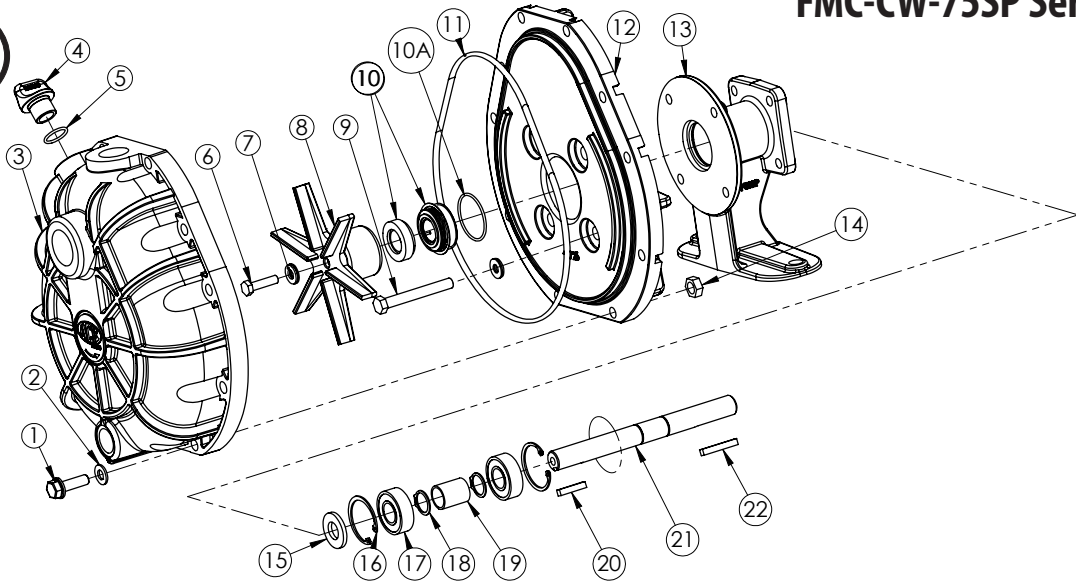
**Do Not Run With Flow Shutoff For Extended Periods**

Running the pump with no flow for extended periods of time will result in excessive heat and pump failure. A continuous bypass is recommended for low flow applications.

**Do not use with flammable liquids.**



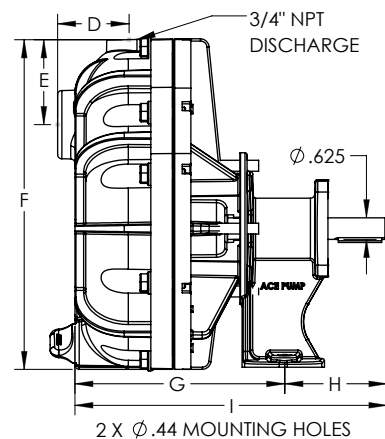
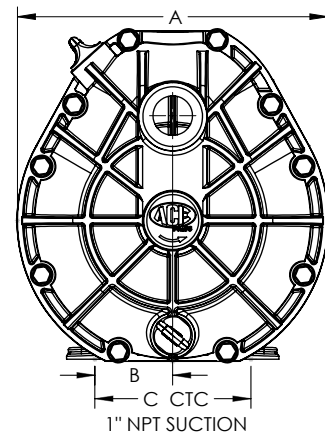
# FMC-CW-75SP Series



## PARTS LIST

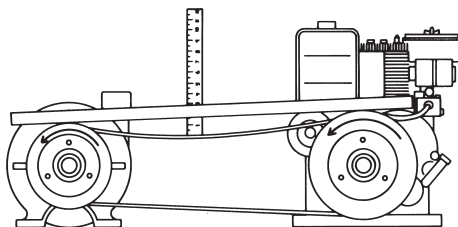
REF. #	PART NUMBER	EDP #	DESCRIPTION	REQ.
1	42237	42237	Cap screw, 5/16"-18 x 1-3/8", hex head	10
2	20730	20730	Washer, flat, 5/16", volute to bracket	10
3	GE-12SP-75	42708	Volute, 1" x 3/4", polypropylene, CW	1
4	41122	41122	Plug, volute	2
5	40191	40191	O-ring, plug	2
6	42240	42240	Cap screw, 1/4"-28 x 1", hex, stainless steel	1
7	30028	30028	Washer, sealing	5
8	GE-26-75	42710	Impeller, with keyway, polypropylene	1
9	42238	42238	Cap screw, 5/16"NF x 2-1/2"	4
10	BAC-7-75V	42730	Seal, 5/8", FKM/carbon/ceramic (includes 40159 O-ring)	1
10	BAC-75C-75V	42731	Seal, 5/8", FKM/silicon carbide (optional) (includes 40159 O-ring)	1
10A	40159	40159	O-ring, seal seat	1
11	40014	40014	O-ring, volute seal	1
12	GE-14-75SP	42725	Bracket, polypropylene	1
13	BAC-14-75-HYD	40293	Mounting frame (for 200R series motors)	1
14	42270	42270	Nut, hex, 5/16"-18	10
15	BAC-54	41130	Slinger	1
16	BAC-33	40810	Snap ring, internal, BAC-14 mounting frame	2
17	BAC-37	40870	Bearing, BAC-6 driven shaft	2
18	BAC-32	40790	Snap ring, external, BAC-6 driven shaft	2
19	BAC-32-S	40795	Spacer for BAC-6 shaft	1
20	41082	41082	Key, 3/16" x 3/16" x 15/16"	1
21	BAC-6-75-SS	40046	Shaft, 5/8" Belt drive, stainless steel	1
22	BAC-50	41080	Key, 3/16" x 3/16" x 1-1/4"	1
①	RK-FMC-75SP	60842	Repair kit for FMC-75SP-HYD series	-
②	RK-FMCS-75SP	60843	Repair kit for FMC-75SP-HYD series with silicon carbide shaft seal	-

## DIMENSIONS



## Belt Tension

Proper tension will allow 1/2" (1 cm) of deflection for each 12" (30 cm) of distance between shaft centers.



Ref.	A	B	C	D	E	F	G	H	I
Inches	8.98	2.63	5.25	2.32	2.48	9.54	6.56	3.00	9.56
MM	228.1	66.8	133.4	58.9	63.0	242.3	166.6	76.2	242.8

### 3D Model Available

<https://www.3DContentCentral.com/parts/supplier/Ace-Pumps.aspx>

Ace Pump Corporation • 1650 Channel Avenue • Memphis, TN 38113  
www.AcePumps.com • Phone: 901-948-8514 • Fax: 901-774-6147