



# Gas Engine Driven Centrifugal Pump



## GE-100-A

- Suction 1-1/4" Discharge 1"
- Maximum Pressure 50 PSI and Maximum Flow 65 GPM
- Impeller attaches directly to 5/8" NF Threaded Shaft on Honda or Briggs & Stratton 3 to 5.5 HP engine
- Stainless Steel Shaft Sleeve
- Available Complete or Less Engine:

GE-100-A                      3.5 HP Briggs

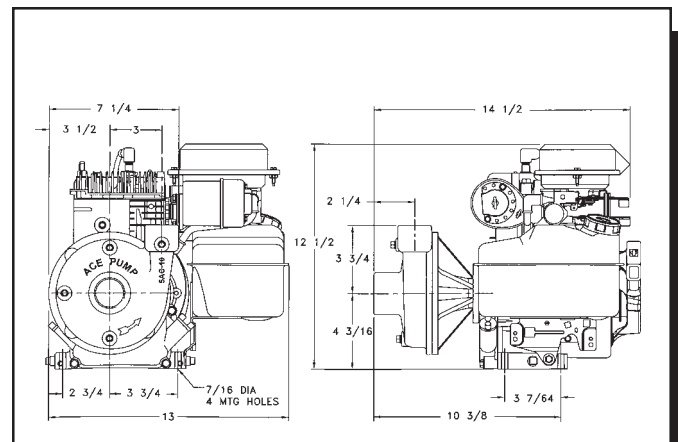
GE-100-A LE                Pump less engine

## PERFORMANCE CHART

ENGINE SHAFT SPEED*	20 PSI	30 PSI	40 PSI	50 PSI
	GPM	GPM	GPM	GPM
3900 RPM	53	45	30	10
3600 RPM	50	42	28	-
3400 RPM	48	40	20	-

\* Engine shaft speed at shut-off.

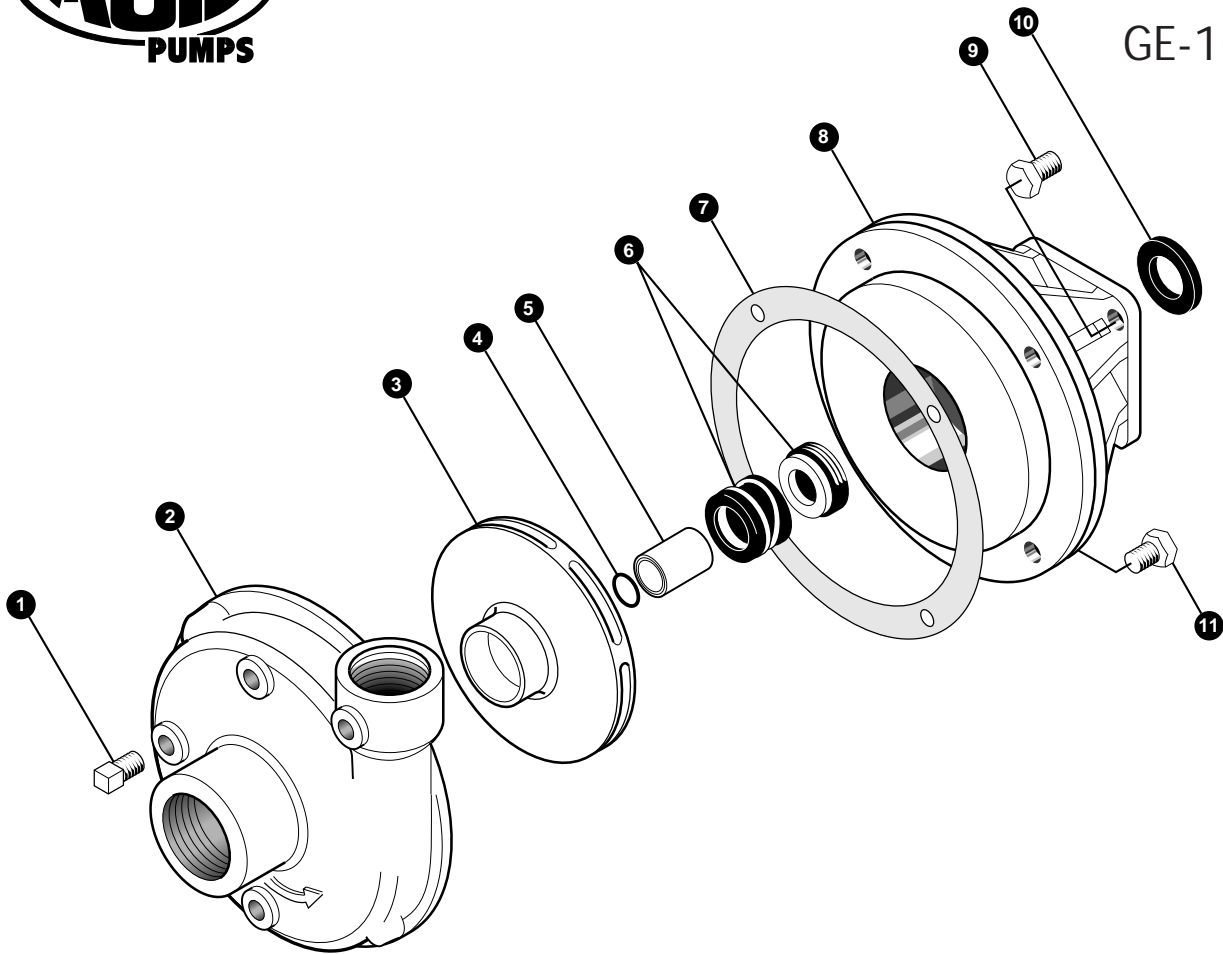
## DIMENSIONS



Note: Dimensions may vary depending on make and size of engine. Use only for Reference



GE-100-A



REF. #	PART #	EDP #	DESCRIPTION	REQ.
1	BAC-53	41110	Pipe plug, 1/8" NPT	4
1	41120	41120	Pipe plug, 1/8" NPT, stainless steel (optional)	4
2	5AC-10	30100	Volute, 1-1/4" x 1", cast iron	1
3	GE-26-A	42161	Impeller, cast iron, right hand 5/8" thread	1
4*	GE-8-V-A	42132	O-ring, shaft sleeve, Viton	1
5	GE-6-SS-A	42105	Sleeve for 1" OD shaft, stainless steel	1
6*	GE-7-V	42120	Seal, 1" Type 6 mechanical seal, Viton	1
7*	31040	31040	Gasket, volute, 4 hole	1
8	GE-9-A	42151	Bracket, cast iron	1
9	GE-60	42230	Cap screw, 5/16" NF x 3/4"	4
9	GE-60-SS	42235	Cap screw, 5/16" NF x 3/4", stainless steel (optional)	4
10	GE-54	42220	Slinger	1
11	40950	40950	Cap screw, 3/8" NC x 3/4"	4
11	40930	40930	Cap screw, 3/8" NC x 3/4", stainless steel (optional)	4
#	GE-1-A	42060	3-1/2 HP gasoline engine, Briggs & Stratton	1
#	GE-2	42070	Handle(optional)	1
#	GE-3	42080	Steel base (optional)	1
#	GE-62	42250	Cap screw, 5/16" NC x 1-1/2", engine to base	4
#	42270	42270	Nut, 5/16" NC hex, engine to base	4
#	RK-GE-100-A	60855	Repair kit for GE-100-A	#

\* Items included in pump repair kit.

Ace Pump Corporation • P.O. Box 13187 - 1650 Channel Avenue • Memphis, TN 38113  
 www.AcePumps.com • Phone: 901-948-8514 • Fax: 901-774-6147

Ace Form # GE-100-A  
 Revised 07/05