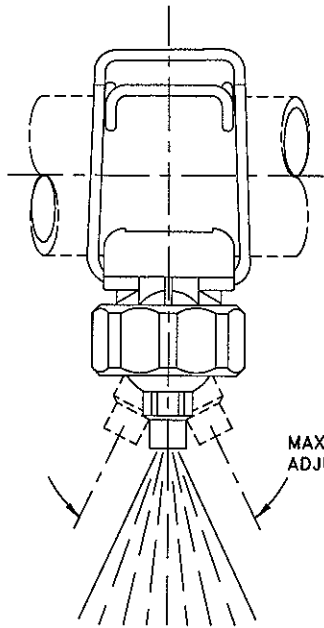
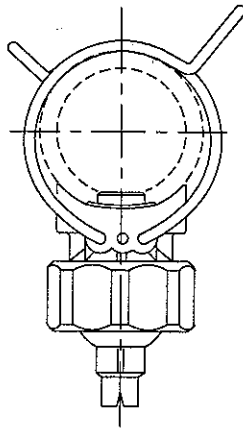


FRONT VIEW



MAX. TOTAL ADJUSTMENT*

SIDE VIEW



* MAX. TOTAL ADJUSTMENT:

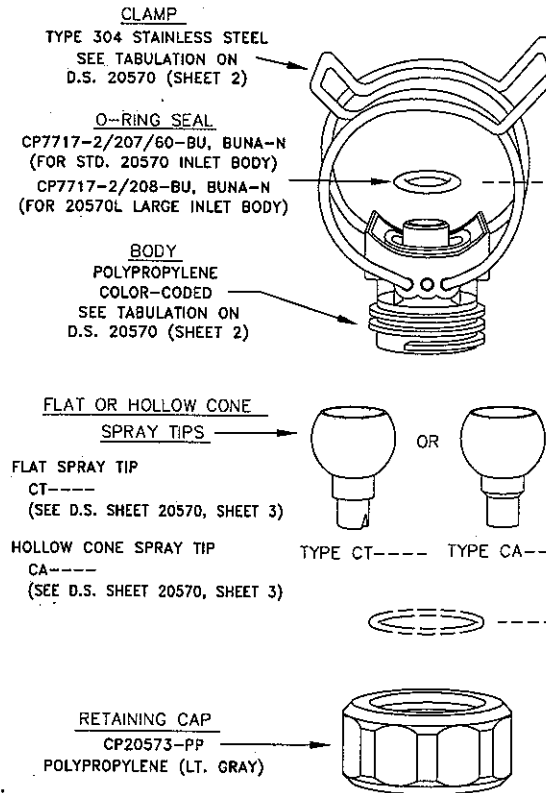
FLAT SPRAY TIP	- 54°
HOLLOW CONE TIP	- 46°
1/4" THREADED BALL	- 54°
3/8" THREADED BALL	- 46°

FEATURES:

- EASY NO-TOOLS INSTALLATION & REMOVAL OF COMPLETE ASSEMBLY.
- AVAILABLE IN SINGLE AND DOUBLE CLAMP DESIGNS.
- STANDARD BODIES TO FIT 9/16" (14 mm) OR 21/32" (17mm) DIA. DRILL HOLE (IN PIPE). OPTIONAL SEAL PROVIDES RETROFIT FOR 27/32" (21 mm) DIA. HOLES.
- SQUARE BODY IMPROVES STABILITY, REDUCES ROTATION WHILE CAP IS BEING REMOVED.
- HEX ON FLAT SPRAY (CT---- STYLE) TIPS ALLOWS FOR WRENCH ALIGNING.
- COLOR CODED FLAT SPRAY TIPS BASED ON CAPACITY.
- SMOOTH INTERNAL SURFACES RESIST SCALE AND CHEMICAL BUILD-UP.
- "POP-IN" TIP DESIGN EASES INITIAL POSITIONING OF TIPS.
- MAXIMUM OPERATING PRESSURES: SINGLE CLAMP - 60 PSI (4 bar), DOUBLE CLAMP - 150 PSI (10 bar).
- LIQUID TEMPERATURES UP TO 180°F AT 100 PSI (82°C AT 7 bar).

NOTE: FOR DIMENSIONS AND ORDERING INFORMATION SEE D.S. 20570 (SHEETS 2 & 3)

STANDARD NOZZLE COMPONENTS



OPTIONAL COMPONENTS

RETROFIT SEAL
CONVERTS STANDARD 9/16" DIA. INLET BODIES
TO FIT 27/32" (21 mm) DIA. HEADER HOLES.



CP20580-BU SEAL, BUNA-N
CP20580-VI SEAL, VITON

O-RING SEAL



CP7717-2/207/60-VI, VITON
CP7717-2/208-VI, VITON

THREADED BALL
POLYPROPYLENE (BLACK)



1/4" NPT(F) or BSPT(F)...
CP20582-1/4-PPB (NPT)
CPB20582-1/4-PPB (BSPT)

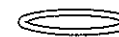
3/8" NPT(F) or BSPT(F)...
CP20582-3/8-PPB (NPT)
CPB20582-3/8-PPB (BSPT)

BLANK TIP
POLYPROPYLENE (GRAY)



FOR LIQUID SHUT-OFF...
CTPLUG-PP

O-RING SEAL (CAP)
PROVIDES BETTER SEALING AND
QUICKER TIP ALIGNMENT.



CP7717-2/121-EPR
CP7717-2/121-VI (VITON)

DESCRIPTION:
NO. 20570 -- CLIP-EYELET
NOZZLE ASSEMBLIES



Spraying Systems Co.

Spray Nozzles and Accessories
P.O. Box 7900 - Wheaton, IL 60189-7900

Rev. No. 10

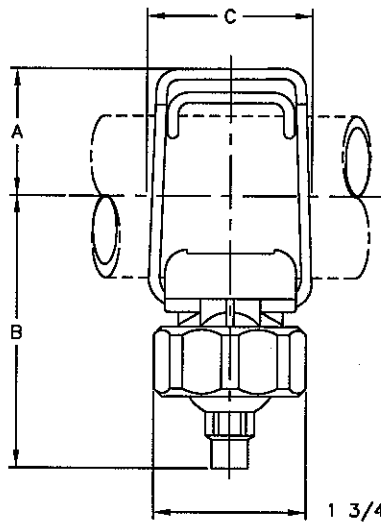
Data Sheet No.

20570

Ref.

SHEET 1 OF 2

CLIP-EYELET ASSEMBLY No.	BODY		CLAMP PART No.		TO CLAMP ON	DIMENSIONS (APPROX.)			DIMENSIONS (APPROX.)		
	PART No.	COLOR	OUTER CLAMP	INNER CLAMP		A	B	C	A mm	B mm	C mm
20570-1-PP	CP20572-1-PP	MEDIUM GRAY	CP20583-1-304SSPV	- - - -	1" PIPE	1 3/4"	3 1/16"	1 7/8"	44	78	48
20570L-1-PP											
20570D-1-PP											
20570DL-1-PP	CP20572-1-1/4-PP	MEDIUM GRAY	CP20576-1-1/4-304SSPV	- - - -	1 1/4" PIPE	1 7/8"	3 1/4"	1 7/8"	48	83	48
20570L-1-1/4-PP											
20570D-1-1/4-PP											
20570DL-1-1/4-PP	CP20572-1-1/2-PPB	BLACK	CP20575-1-1/2-304SSPV	- - - -	1 1/2" PIPE	2"	3 3/8"	1 7/8"	51	86	48
20570L-1-1/2-PPB											
20570D-1-1/2-PPB											
20570DL-1-1/2-PPB	CP20572-2-PPB	BLACK	CP20584-2-304SSPV	- - - -	2" PIPE	2 3/8"	3 5/8"	1 15/16"	60	92	49
20570-2-PPB											
20570L-2-PPB											
20570D-2-PPB	CP20572-2-PPB	BLACK	CP20584-2-304SSPV	- - - -	2" PIPE	2 3/8"	3 5/8"	1 15/16"	60	92	49
20570DL-2-PPB											



HOW TO ORDER:

COMPLETE NOZZLE ASSEMBLY:

20570 D L - 1-1/4 - PP + CT6540-PP
 NOZZLE *CLAMP *INLET PIPE MATERIAL **SPRAY TIP
 ASB. No. DESIGN SIZE SIZE CODE No.

RETROFIT SEALS:

SPECIFY SEAL No. AND MATERIAL
 EXAMPLE: CP20580-BU (BUNA-N)

SPRAY TIP ONLY:

SPECIFY SPRAY TIP No.
 EXAMPLE: CT6540-PP

* CLAMP DESIGN - (NO DESIGNATION) INDICATES SINGLE CLAMP; "D" INDICATES DOUBLE CLAMP.
 INLET DIA. - (NO DESIGNATION) INDICATES 9/16" (14 mm); "L" INDICATES LARGE, 21/32" (17 mm) DIA..

** FOR SPRAY TIP No. SEE DATA SHEET 20570, SHEET 3.

DESCRIPTION:
 NO. 20570 -- CLIP-EYELET
 FLAT & HOLLOW SPRAY
 NOZZLE ASSEMBLY
 - DIMENSIONAL INFORMATION -



Spraying Systems Co.

Spray Nozzles and Accessories
 P.O. Box 7900 - Wheaton, IL 60189-7900

Rev. No. 9

Data Sheet No.

Ref.

20570

SHEET 2 OF 3

SPRAY PERFORMANCE

FLAT SPRAY (CT-- STYLE)

CLIP-EYELET TIP SIZES						TIP COLOR	U.S. UNITS							METRIC UNITS						
SPRAY ANGLE AT 40 PSI (3 bar)							CAPACITY IN GALLONS PER MINUTE							CAPACITY IN LITERS PER MINUTE						
15°	25°	40°	50°	65°	80°		5 PSI	7 PSI	10 PSI	20 PSI	30 PSI	40 PSI	60 PSI	0.3 bar	0.7 bar	1 bar	1.5 bar	2 bar	3 bar	4 bar
				CT6510-PP	CT8010-PP	BEIGE	.35	.42	.50	.71	.86	1.0	1.2	1.2	1.9	2.3	2.8	3.2	3.9	4.6
		CT4020-PP	CT5020-PP	CT6520-PP		LIGHT BLUE	.71	.84	1.0	1.4	1.7	2.0	2.5	2.5	3.8	4.6	5.6	6.5	7.9	9.1
	CT2530-PP	CT4030-PP	CT5030-PP	CT6530-PP		ORANGE	1.1	1.3	1.5	2.1	2.6	3.0	3.7	3.7	5.7	6.8	8.4	9.7	11.8	13.7
		CT4040-PP	CT5040-PP	CT6540-PP	CT8040-PP	GREEN	1.4	1.7	2.0	2.8	3.5	4.0	4.9	5.0	7.6	9.1	11.2	12.9	15.8	18.2
CT1550-PP		CT4050-PP	CT5050-PP	CT6550-PP	CT8050-PP	YELLOW	1.8	2.1	2.5	3.5	4.3	5.0	6.1	6.2	9.5	11.4	14.0	16.1	19.7	23
	CT2560-PP	CT4060-PP	CT5060-PP	CT6560-PP	CT8060-PP	BLUE	2.1	2.5	3.0	4.2	5.2	6.0	7.3	7.5	11.4	13.7	16.7	19.3	24	27
CT1570-PP	CT2570-PP	CT4070-PP	CT5070-PP	CT6570-PP	CT8070-PP	RED	2.5	2.9	3.5	4.9	6.1	7.0	8.6	8.7	13.3	16.0	19.5	23	28	32
CT15100-PP	CT25100-PP	CT40100-PP	CT50100-PP	CT65100-PP	CT80100-PP	BROWN	3.5	4.2	5.0	7.1	8.6	10.0	12.2	12.5	19.1	23	28	32	39	46

HOLLOW CONE (CA-- STYLE)

TIP & VANE SUB-ASSEMBLY NO.	U.S. UNITS										METRIC UNITS									
	CAPACITY IN GALLONS PER MINUTE										CAPACITY IN LITERS PER MINUTE									
	5 PSI	10 PSI	20 PSI	30 PSI	40 PSI	50 PSI	60 PSI	7 PSI	20 PSI	60 PSI	0.35 bar	0.7 bar	1 bar	1.5 bar	2 bar	3 bar	4 bar	0.5 bar	1.5 bar	4 bar
CA15-30.1-PP	1.6	2.3	3.2	3.9	4.5	5.0	5.4	46°	49°	51°	6.2	8.8	10.4	12.6	14.5	17.6	20.2	46°	49°	51°
CA25-30.1-PP	2.0	2.8	3.9	4.7	5.4	6.1	6.6	45°	47°	50°	7.5	10.7	12.7	15.4	17.6	21.4	24.6	45°	47°	50°
CA50-50.1-PP	3.5	5.0	7.0	8.6	9.9	11.1	12.1	38°	46°	48°	13.5	19.0	22.7	27.8	32.0	39.2	45.2	38°	46°	48°
CA50-50.3-PP	3.5	5.0	7.0	8.5	9.8	10.9	11.9	75°	75°	76°	13.5	19.0	22.7	27.6	31.8	38.7	44.4	75°	75°	76°

DESCRIPTION:

NO. 20570 -- CLIP-EYELET
FLAT & HOLLOW CONE SPRAY
NOZZLE ASSEMBLY
- SPRAY PERFORMANCE -



Spraying Systems Co.

Spray Nozzles and Accessories
P.O. Box 7900 - Wheaton, IL 60189-7900

Rev. No.

Data Sheet No.

20570

Ref.

SHEET 3 OF 3